

OUTDOOR POWER PACK USER'S MANUAL

Thanks for choosing our product, Please read the manual carefully before use

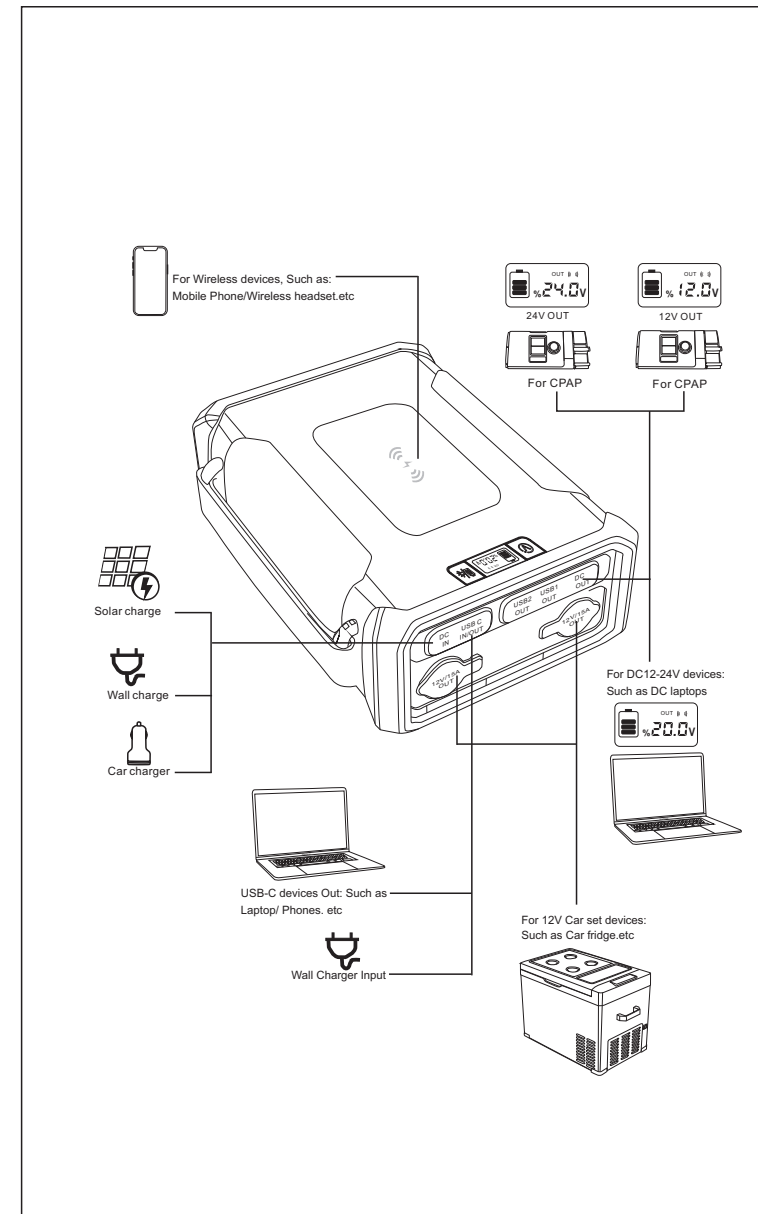
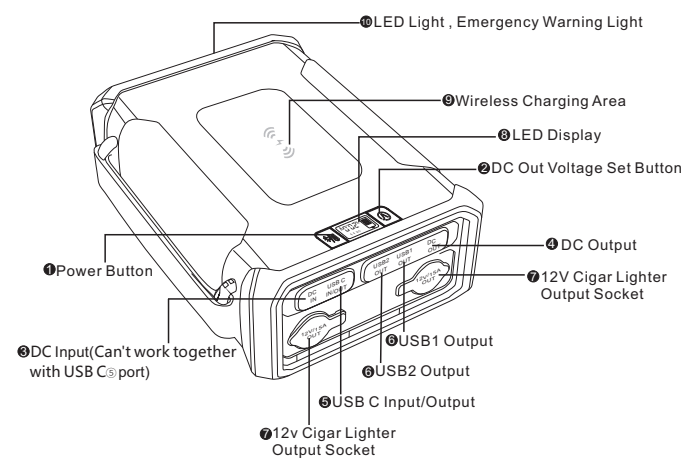
Technical Specifications

Name : Outdoor Power bank
Capacity : 307.2Wh / 26Ah @12.8V/96000mAh @3.2V
INPUT:
DC Input : 18-24V/4A(Max) Max Solar charging: 80W
USB-C Input : DC5V/3A 9V/3A 12V/3A 15V/3A 20V/3A
OUTPUT:
Cigare Lighter Socket output : 12V / 15A(max)
USB 1&2 Output: 5V/3A 9V/2A 12V/1.5A
USB-C Output : DC5V/3A 9V/3A 12V/3A 15V/3A 20V/3A
DC Output:12V/5A 16.5V/4A 20V/3.5A 24V/3.5A
Wireless : 10W
Measure : 225.8*165*76mm
N.W : 3043.4g

Package Contents

1x Power Pack
1x20V/2A Adapter
1x C-C Cable
1x Manual
1x8*1 DC Laptop Connector
1x Handy bag (Option)
1x CPAP Cable (4PCS) Option

Identification of parts



Recharge Power Bank

Use the DC ⑧ or USB C ⑨ input port to charge, but can't work together to recharge
1. Plug the adapter's cable into the DC ⑧/USB C ⑨ input port of the battery pack. Please use supplied adapter or PD charger (Power Above 60W is recommended).
2. Connect the adapter to AC 100V-240V
3. Charging will begin automatically
4. Recharging time: It will take about 10 hours to fully charge the battery pack with supplied adapter, about 8 hours with branded PD charger (60W or above).
Solar panel charging time will vary from the power of solar panel and light intensity, it will support up to 80W recharging.

LED Display

Click the power button to turn on the wireless charging function.
The digital display screen shows the power bank battery level:
One grid means 25% battery Power,
two grid means 50% battery power level,
three grid means 75%,
and four grid means 100% battery power level (as shown in the picture).

Charge your digital devices

1. USB1 and USB2 are suitable for charging mobile phones, tablet and other digital devices.
2. USB C ⑨ is suitable for charging most laptops and devices with USB C charging function.
3. The Power Bank can automatically charge the device. If it cannot be charged, please check the connection cable and press the power button ⑤.

Power to other DC input devices

1. When charging your DC devices, you need select the correct voltage and connector first.
2. Long press the voltage set button ④ for 3 seconds, the select-able voltage value (12V, 16.5V, 20V, 24V) on the LED Display ③ will flash and stay on each voltage for 5 seconds. Short press the voltage set button ④ to jump among all select-able values till you find the right one for your devices. After the voltage value on the LED Display ③ stops flashing, the DC port ⑥ can output the voltage.
3. Connect the DC connector to the device and start charging the devices
4. If unplug the DC port ⑥ devices, the power bank will continue to work (light on) for 2 hours, after 2 hours the power bank will automatically turn off. Or after removing the device from the DC port ⑥, manually long press 5 seconds the Power button ⑤ to turn off the DC output function

12V Cigar lighter socket output

1. 12V devices Supported: Car refrigerator/inflator pump, UAC battery/outdoor tent light/ Camp light/fishing light/hunting light/fan and other devices under 150W.
2. Plug the devices into 12V cigar lighter socket.
3. The Socket will automatically power the connected device.
4. To Turn off the devices & unplug it from the power pack.

Wireless charging

Click the power button to turn on the wireless function, Max 10W wireless charging.

Emergency warning light, LED Light

Warning light: Long press the power button to turn on the orange warning light, and long press again to turn off the orange warning light.
LED light: Double click the power button to turn on the white LED light, Then double click to turn off the LED light

Usage Notes

- Pass-Through charging: DC ⑧ input and DC port ⑥ output can be used at the same time
- USB-C port ⑨ and DC port ⑥: These two ports will not automatically turn off after charging. The power bank will turn off automatically after unplugging the device for two hours. Or you can manually turn off the power by holding the switch button ⑤ for more than 5 seconds
- Using a power inverter with your power pack, ensure it is no more than a maximum 150w.
- To protect the battery cycle life, Please unplug the charging cable after it is fully charged when using the AC adapter or a USB-C charger
- Do not store in extreme heat or coldness, near anything flammable or explosive and keep it away from damp areas.
- Run a full charge / discharge cycle at least once every four months to avoid shortening the life span of the internal battery.
- If long term storage is likely to occur between uses, we recommend storing power at approximately 50% full.
- Although the 12V socket is capable of pass through charging, avoid charging and discharging the Power pack at the same time as this may reduce the battery's life span.
- Please note the cigarette lighter output voltage range is 12V-14V.
- When supply power for different devices, the DC port ⑥ can output the voltage. A further 10% - 20% is lost by the device being charged and the charging cable used. Always use the original cable supplied with the device being charged for optimum results.
- Using your Power pack in temperatures below 0C or above 40C is highly unadvisable and will likely cause irreparable damage to the internal battery.

FAQ

Q1. Can I charge four devices at the same time?
A1. Yes, but the total power does not exceed 300W. It is recommended not to connect USB-C or DC when the 12V cigarette lighter port is working at full load.

Q2. What should we do if the power bank can't recharge?
A2. Please check the charging adapter is connected correctly and the 100V-240V AC charging is enabled. If the problem still exists, please contact the supplier for more professional advices.

Q3. What should we do if the power supply cannot charge other devices?
A3. Please Check the charging line is inserted in the correct port, or check whether the output of this power supply is compatible with the voltage of electronic devices. Refer to your device's manual, product label, or adapter

Warranty

We provide customer with a comprehensive warranty of 12 months from the date of purchase.



户外移动电源 用户手册

感谢您使用本产品,使用前请认真阅读本手册!

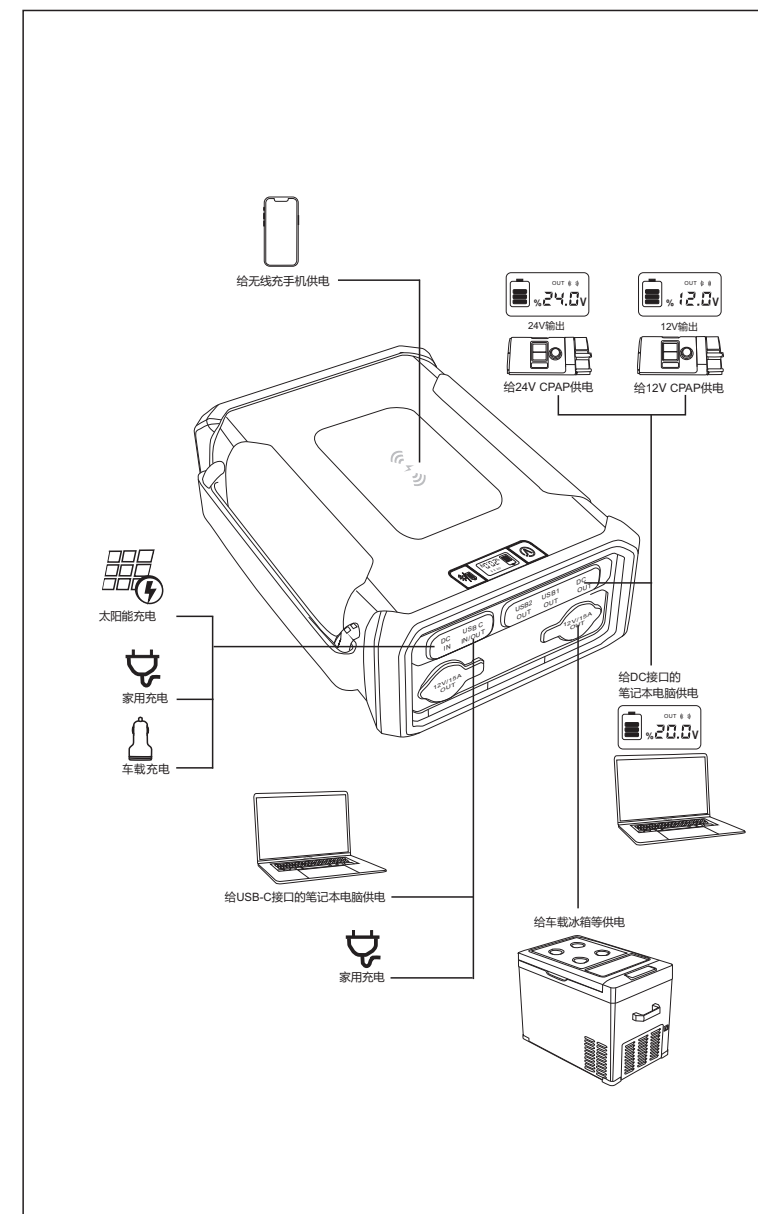
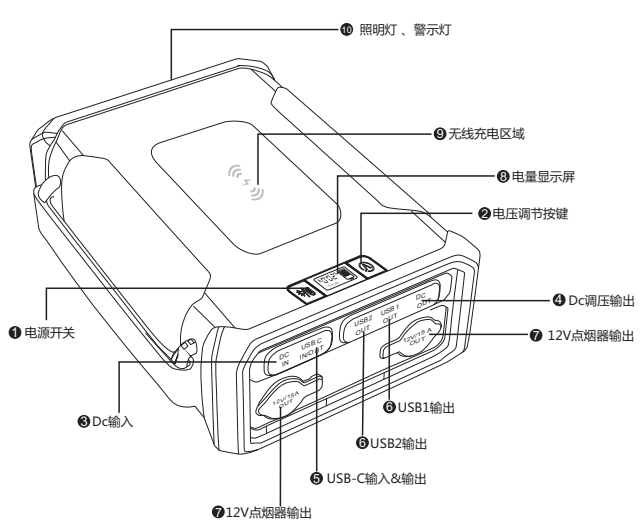
规格参数

名称: 户外移动电源
容量: 307.2Wh / 26Ah @12.8V/96000mAh @3.2V
DC输入: 18-24V/ 4A(max)
USB-C输入: DC5V/3A 9V/3A 12V/3A 15V/3A 20V/3A
点烟器1&2输出: 12V / 15A(max)
USB 1&2输出: 5V/3A 9V/2A 12V/1.5A
USB-C输出: DC5V/3A 9V/3A 12V/3A 15V/3A 20V/3A
DC输出:12V/5A 16.5V/4A 20V/3.5A 24V/3.5A
无线充电输出: 10W
尺寸: 225.8*165*76mm 净重: 3043.4g

包装清单

电源 x1
充电器 x1
说明书 x1
C-C充电线 x1
笔记本转接头 x8(选配)
CPAP充电线 x4 (选配)
收纳袋 x1(选配)

示意图



给电源充电

使用DC接口 ⑧ 或USB-C接口 ⑨ 充电,但不能同时使用
1.用户请使用随机附送的适配器或自行购买的品牌的PD充电器(建议60W以上),或者太阳能板充电
2.充满产品的时间:使用随机配套的适配器充满本产品的约需10小时左右;品牌的PD充电器(60W以上)需6小时左右。太阳能板充电与太阳能板功率及光线强弱有关,支持最大80W充电
3.使用方法:适配器插入DC ⑧ 后,LED屏显示IN,同时电量格闪烁LED电量显示灯,当电量格持续不再闪烁时,电源已被充满

LED电量显示灯

单击电源按键,打开无线充电功能,显示无线充标志。
数码显示屏上显示移动电源的电量:一格电表示电量25%,二格电表示电量50%,三格电表示电量75%,四格电表示电量100%(如图所示为电量100%)

给数码设备充电

1.USB1与USB2适合为手机,平板电脑,其他数码设备充电
2.USB C ⑨ 适合为具有USB C充电功能的大多数笔记本电脑及设备充电
3.电源可以自动给设备充电,如发现不能充电时,请检查连接线及连接情况,并按电源按键 ⑤

给其他DC输入设备供电

1.给DC设备充电时,先选择合适的线或连接线
2.长按调压按键 ④ 3秒后,数码显示屏 ③ 上电压闪烁并在每个电压上停留5秒,电压显示顺序依次为12V,16.5V,20V,24V,请根据您的设备选择合适的电压
3.当闪烁的电压值非适合您设备的电压时请单击调压按钮 ④ 到您需要的电压,LED显示屏上的电压停止闪烁后,DC接口 ⑥ 即可输出该电压,如DC接口 ⑥ 未在90秒内连接设备,将关闭输出,如需使用请重复刚才的动作
重新调整电压时:两种操作方法如下:
1.长按3秒,先关闭输出。再长按3秒,显示屏电压跳动时,方可调节电压
2.拔掉DC输出设备后60秒,再长按调压按键,显示屏电压跳动时选择电压

给12V点烟器设备供电

1.主要支持的设备:车载冰箱,充气泵,狩猎灯,车载逆变器等于150W的电动设备
2.将设备插入电源上面的12V点烟器接口
3.电源会自动给连接的设备充电
4.关掉设备,从电源拔出

给无线设备供电

单击电源按键,打开无线充电功能,显示无线充标志表示无线充电功能已打开。无线充最大功率10W,并具有磁吸功能,如手机无线充电功能,请将手机中心与电源无线充电区域中心尽量重合(注:不兼容部分耳机无线充电)

应急警示灯、LED灯

警示灯:长按电源按键打开橙色警示灯,再长按关闭橙色警示灯。

使用说明

- 使用DC接口 ⑧ 与USB-C接口 ⑨ 不能同时使用
- 本产品采用安全性高,循环寿命长的LiFePO4电芯,在较低温度下使用时,放电效率会有明显降低
- DC输出 ⑥ 和USB-C输出 ⑨ 拔掉设备之后输出不能自动关闭,电源要2个小时之后才能自动关闭,可手动按电源开关 ⑤ 4秒关闭
- 为保护电池容量的可持续使用,请立即在设备充满电后拔出充电线
- 请不要将电源放置在极热或极冷的地方,以及任何易燃易爆物存放处或潮湿的地方,也请避免因突然加速或减速使其撞击在硬面上
- 每隔四个月至少进行一次充满放电循环,以避免缩短内置电池的使用寿命
- 如果要将其放置很久才会使用,建议在存放之前,请控制电量至少在50%左右
- 使用12V点烟器接口输出时,请不要给电源充电,可能会使电池的寿命变短
- 12V点烟器输出接口的电压区间为12V-14V
- 在对不同设备供电时,设备被充电和充电线会有10-20%的电量损耗。经常使用此电源所附带的原装数据线充电最佳
- 不建议在低于0°C或高于60°C的环境下使用此电源。以避免对内置电池引起不可修复的损坏,当超出此温度时,电源将会关闭

常见问题解答

- 我可以这个电源同时给4个设备充电吗?
可以,但总功率不超过300W,建议不要在12V点烟器接口 ⑦ 满负荷工作时USB-C ⑨ 或DC接口 ⑥ 不使用大功率耗电设备
- 如果电源不能充电怎么办?
检查充电适配器连接是否正确,100V-240V AC 充电是否开启,如果问题仍然存在,请联系供应商售后服务给予更专业建议。
- 如果电源不能给其他设备充电怎么办?
检查充电线是否插入正确地方,或者检查此电源的输出是否兼容电子设备所要求的电压。请参考您设备的说明书,产品标签,或适配器来查询此信息。

保修期

从购买日起,12个月的保修期

